



HINCHLIFFE
HOLMES



17 WOODHAM CLOSE



GROUND FLOOR

Entrance Hall | Living Room | Dining Room | Kitchen
Office | Utility Room | WC

FIRST FLOOR

Landing | Bedroom One - Walk-in Wardrobe - En-suite
Bedroom Two - En-suite | Bedroom Three | Bedroom Four | Bathroom

OUTSIDE

Parking | Double Garage | Gardens

17 WOODHAM CLOSE

Hartford | CW8 1SG

Sitting within walking distance to the centre of Hartford, this magnificent detached dwelling sits on one of the most sought after locations within the village. Internally, the hallway leads off to three reception rooms, kitchen, utility and downstairs WC. Leading to the first floor, the property features four generously proportioned rooms alongside three bathrooms with the master bedroom suite also benefitting from a walk-in-wardrobe. The property extends to around 2306 SQFT of living accommodation internally before leading to a double detached garage with parking for several vehicles and full wrap around garden offering privacy and good entertaining space.

Hartford is one of Cheshire's most popular villages, combining rural appeal with first class accessibility and a superb range of amenities.

The village boasts a number of shops, including newsagents, pharmacy, florist, butchers and two general convenience stores - a Co- Operative and Sainsbury's. In addition, there are two very popular cafés/wine bars that also serve food throughout the day. Other facilities include the Hartford Hall Hotel, two public houses and two thriving churches.

Hartford is renowned for its superb educational facilities catering for all age groups, including the highly reputable and very popular Grange School (Junior and Secondary level), Hartford Church of England High School, two excellent state junior schools, St Wilfred's Primary School, St Nicholas's Roman Catholic High School and a day nursery.

With regards to leisure facilities, there are several good golf clubs nearby, a tennis/bowls club within walking distance of the property and many beautiful walks along the river Weaver, accessed from well- planned public footpaths. Hartford is well positioned to take advantage of outdoor activities in central Cheshire, including dog walking, horse riding and rambling, with the Whitegate Way, Marbury Country Park, Delamere Forest and the Sandstone Trail all with easy travel distance. Several golf courses, including Hartford, Sandiway and Vale Royal are a few minute's drive away.

Within walking distance of the house are two railway stations - Greenbank (Manchester to Chester line) and Hartford (Liverpool - Crewe - London). Road access to the M6, M53 and M56 is afforded by the A556 and the A49, making commuting to Chester, Warrington, Liverpool and Manchester and MediaCityUK easily accessible. For those who require European or international travel, Liverpool and Manchester International Airports can be accessed within 45 minute's drive.

































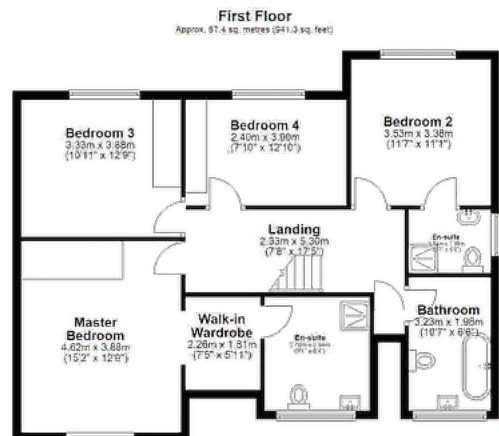
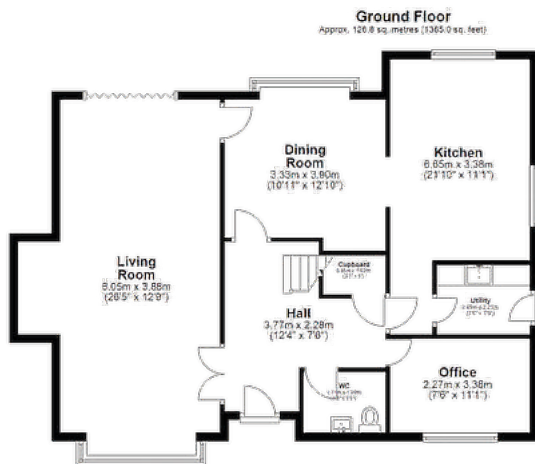




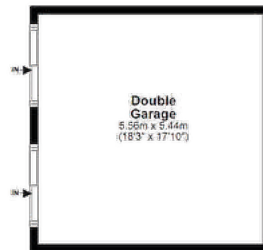








Total area: approx. 214.3 sq. metres (2306.2 sq. feet)



TENURE

Freehold. Subject to verification by Vendor's Solicitor.

SERVICES (NOT TESTED)

We believe that mains water, electricity, central heating and drainage are connected.

LOCAL AUTHORITY

Cheshire West And Chester. Council Tax – Band G.

POSSESSION

Vacant possession upon completion.

VIEWING

Viewing strictly by appointment through the Agents.

NOTICE: Hinchliffe Holmes for themselves and for the vendors or lessors of this property whose agents they are give notice that:

(i) the particulars are set out as a general outline only for the guidance of intending purchasers or lessees, and do not constitute, nor constitute part of, an offer or contract;

(ii) all descriptions, dimensions, references to condition and necessary permissions for use and occupation, and other details are given in good faith and are believed to be correct but any intending purchasers or tenants should not rely on them as statements or representations of fact but must satisfy themselves by inspection or otherwise as to the correctness of each of them;

(iii) no person in the employment of Hinchliffe Holmes has any authority to make or give any representation or warranty whatever in relation to this property.

(iv) Whilst every attempt has been made to ensure the accuracy of the floor plan contained here, measurements of doors, windows, rooms and any other items are approximate and no responsibility is taken for any error, omission, or mis-statement. This plan is for illustrative purposes only and should be used as such by any prospective purchaser. The services, systems and appliances shown have not been tested and no guarantee as to their operability or efficiency can be given.



what3words: opposite.struggle.denim



Hinchliffe Holmes is an award winning independent family estate agency positioned in the heart of Cheshire with offices in Tarporley and Northwich.

The business was founded with a passion for providing properties that are accessible to clients at all stages of their working and family lives. Most importantly it provides an exciting approach

to the property market meeting the personal needs of our clients.

Hinchliffe Holmes specialises in the sale of town and country properties, shaping its reputation on a bespoke level of quality advice, superb local knowledge and exceptional customer service, along with maximum exposure of all properties through our wide advertising and marketing ability.

EXCLUSIVE LISTINGS

An Exclusive Listing is a home sale that is not listed on the open market and therefore it is sold off-market using more private and discrete methods.

Your home is one of a kind, the process of selling should be unique to you and your needs. Not all home sellers follow the traditional route when putting their home on the market. For some, an Exclusive Listing, can be the right method to sell their home.

LAND & NEW HOMES

The team at Hinchliffe Holmes offer experienced and professional advice for the purchase and sale of land, property development and the purchase of newly built and developed property.

MORTGAGES

The Hinchliffe Holmes team is committed to providing the best possible service and advice. Our team of skilled and caring advisors will guide you through the mortgage application, removing the stress and simplifying the whole process.

LETTINGS

With our bespoke and personal approach, Hinchliffe Holmes has a tailored range of services to suit your needs as a Landlord. Our expert team will showcase your property to thousands of potential tenants each month.

PROPERTY MANAGEMENT

With various service options to choose from, you can decide which package suits your requirements, and as an independent agent we can tailor-make each service for each landlord.

more than
30,000
viewings arranged

£600 MILLION
worth of property sold

on average
99.1 %
of asking price
achieved

OVER 7,000 OFFERS



UNITED KINGDOM
PROPERTY AWARDS
REAL ESTATE



ROLLS-ROYCE
MOTOR CARS
AUTHORISED DEALER
P&A WOOD

★★★★★

BEST ESTATE AGENCY
SINGLE OFFICE CHESHIRE

Hinchliffe Holmes

2021-2022



UNITED KINGDOM
PROPERTY AWARDS
REAL ESTATE



ROLLS-ROYCE
MOTOR CARS
AUTHORISED DEALER
P&A WOOD

★★★★★

BEST ESTATE AGENCY
SINGLE OFFICE CHESHIRE

Ben Hinchliffe

2022-2023



UNITED KINGDOM
PROPERTY AWARDS
REAL ESTATE



ROLLS-ROYCE
MOTOR CARS
AUTHORISED DEALER
P&A WOOD

★★★★★

BEST ESTATE AGENCY
SINGLE OFFICE CHESHIRE

Hinchliffe Holmes Ltd

2022-2023



UNITED KINGDOM
PROPERTY AWARDS
REAL ESTATE

★★★★★

BEST ESTATE AGENCY
SINGLE OFFICE CHESHIRE

Hinchliffe Holmes

2023-2024



The **Negotiator**
Awards 2022

REGIONAL AGENCY
OF THE YEAR
NORTH EAST
& NORTH WEST

GOLD



BEST
ESTATE AGENT GUIDE
AWARDS 2023

WINNER
LETTINGS

AWARDED FOR
MARKETING | SERVICE | RESULTS





**HINCHLIFFE
HOLMES**

INDEPENDENT ESTATE AGENTS

**SALES | LETTINGS | MORTGAGES
LAND & NEW HOMES | PROPERTY MANAGEMENT**

TARPORLEY OFFICE

56B High Street, Tarporley, Cheshire, CW6 0AG

01829 730 021 - tarporley@hinchliffeholmes.co.uk

NORTHWICH OFFICE

28 High Street, Northwich, Cheshire, CW9 5BJ

01606 330 303 - northwich@hinchliffeholmes.co.uk

www.hinchliffeholmes.co.uk